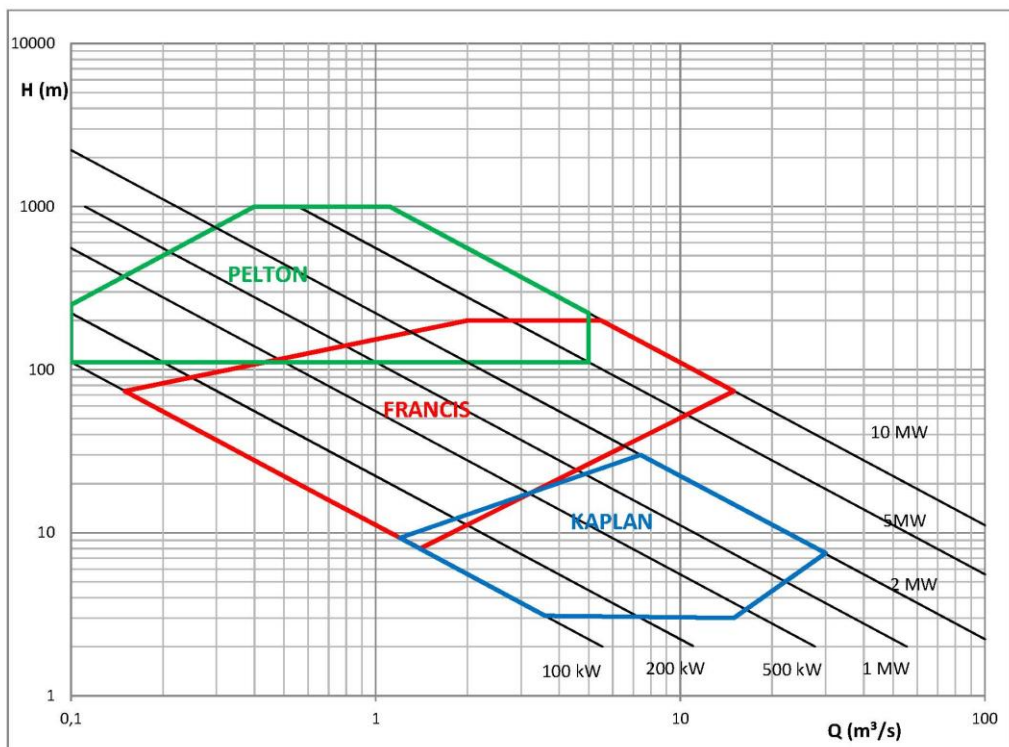
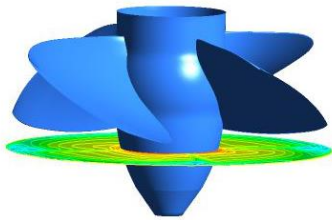




SMALL HYDRO POWER PLANTS

Max power **10 MW**
Max head **300 m**
Max flow rate **20 m³/s**



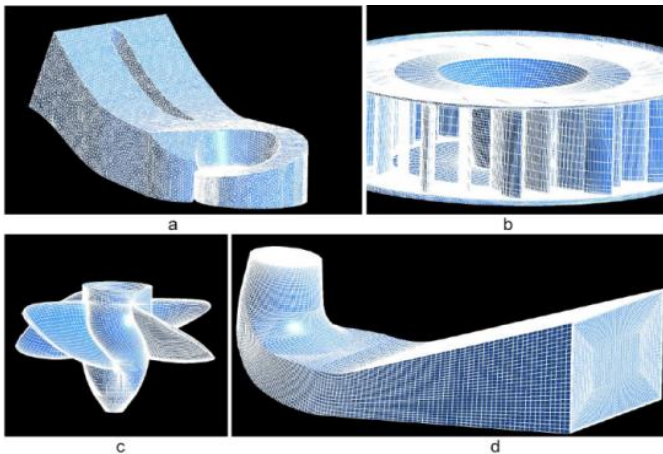
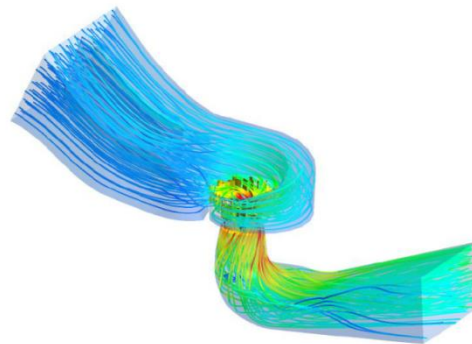
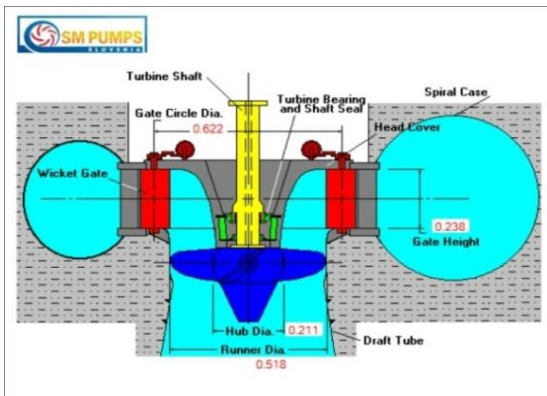
Complete small hydro power plants

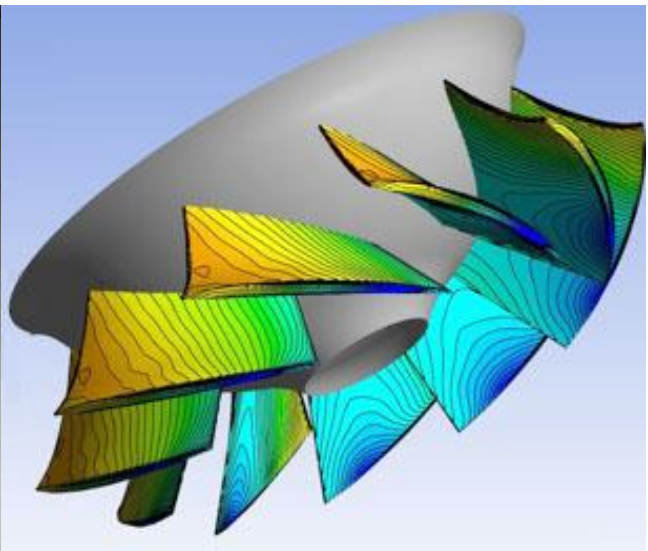
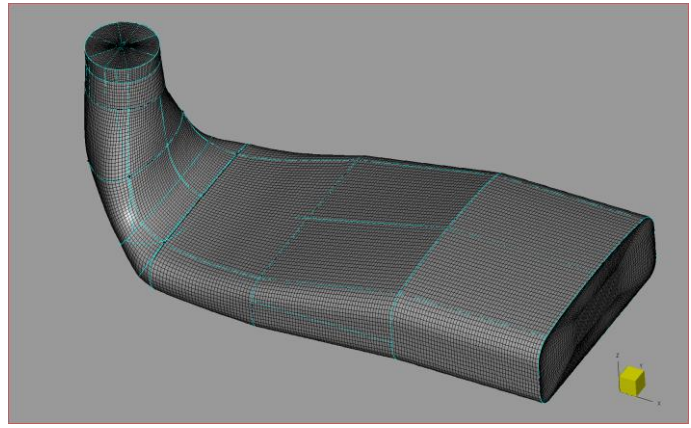
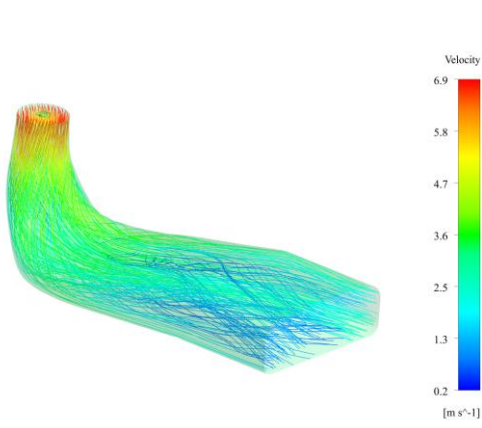
Turbines

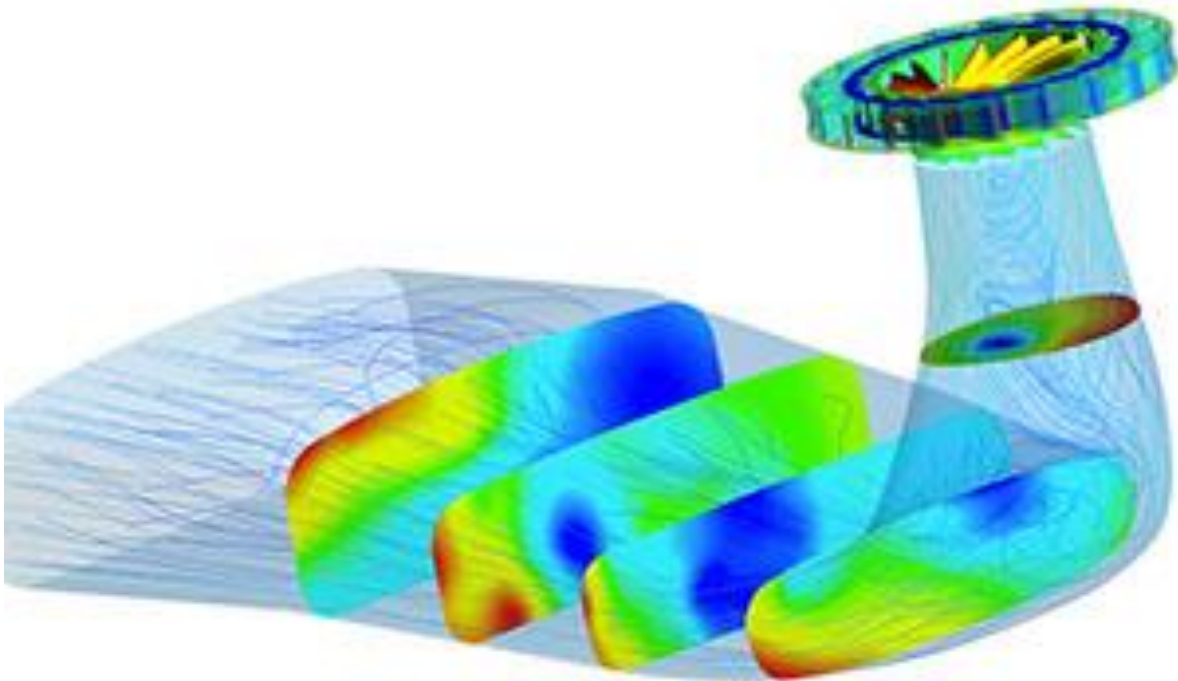
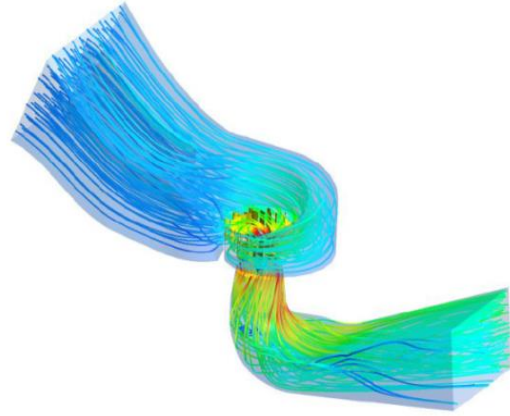
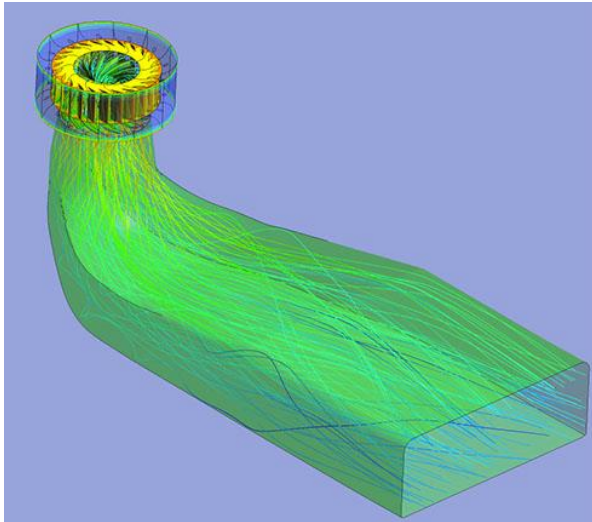
Electrical equipment

Valves

Automatization and regulation







SM BUSINESS SERVICES AND TRADING
Milana Majcna 18, 1000 Ljubljana
SLOVENIA
Mail: srecko.mitrusevski@gmail.com